An aerial photograph of a lush green forest. A river flows through the lower left portion of the image. In the center, a spring emerges from the forest floor, creating a small pool of water. The text is overlaid on the upper half of the image.

Distribution, Characteristics, and MFLs of Suwannee River Water Management District Springs

Florida Springs Restoration Summit

November 2, 2018

John C. Good, P.E.

Minimum Flows and Levels

- Required by Chapter 373, F.S.
- “The minimum flow for a given watercourse shall be the limit at which **further withdrawals would be significantly harmful** to the water resources or ecology of the area.”

62-40 F.A.C.

Ecological and Water Resource Values

- Recreation
- Fish & wildlife habitats and passage of fish
- Estuarine resources
- Detrital transfer
- Freshwater storage and supply
- Aesthetic and scenic attributes
- Pollutant filtration and adsorption
- Sediment
- Water quality
- Navigation

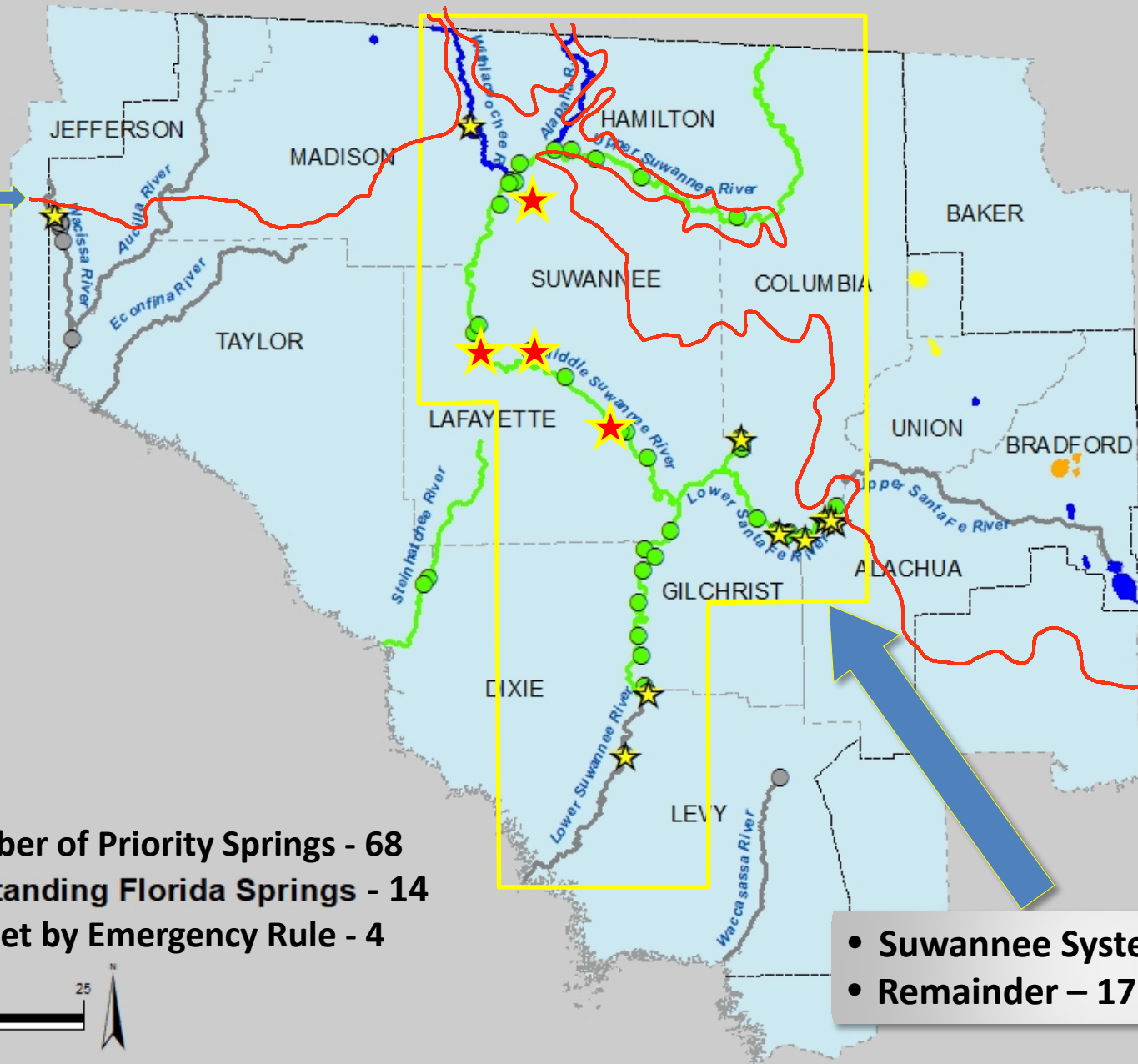
Outstanding FL Springs in Rule, Other Priority List Springs, and Associated River System

River System	Outstanding Florida Springs	Other
Withlacoochee	Madison Blue	1
Lower Suwannee	Fanning & Manatee	1
Waccasassa	(none)	1
Ichetucknee	Ichetucknee	5
Lower Santa Fe	Treehouse, Columbia, Hornsby, Poe, Devils Ear	6
Aucilla	Wacissa	12
Middle Suwannee	Falmouth, Lafayette Blue, Peacock, Troy*	19

* Emergency Rules on Middle Suwannee
Outstanding Florida Springs

SRWMD MFL Schedule

Cody Scarp



Springs

- Adopted
- 2019
- 2020

Rivers

- Adopted
- 2019
- 2020

Lakes

- 2020
- 2021
- >2021

Number of Priority Springs - 68

★ Outstanding Florida Springs - 14

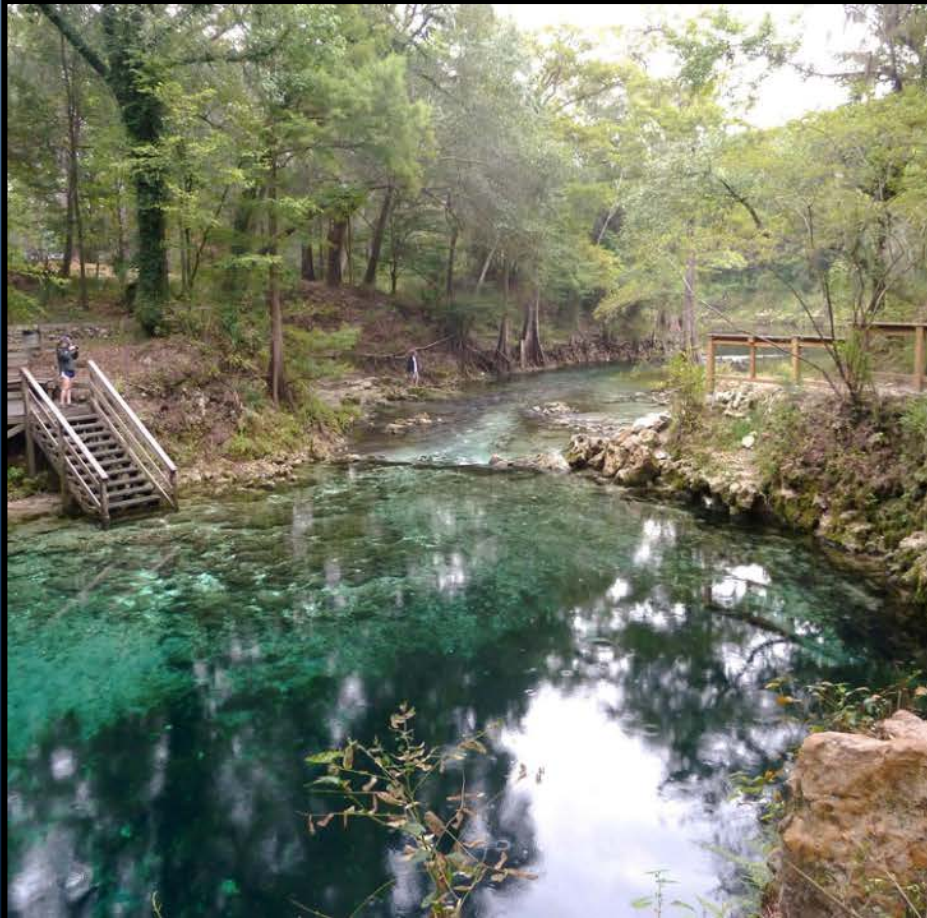
★ OFS set by Emergency Rule - 4

- Suwannee System – 51 (75%)
- Remainder – 17 (25%)

Madison Blue Spring

Normal Flow Conditions

Flood Conditions



September 4, 2011



March 9, 2012



Characteristic: Measurement Challenges

(clockwise from left)

- Levy Blue
- Falmouth
- Boiling

